



10 years warranty

170 lm/w



On-demand Lighting

First Plug&Play Smart LED HighBay

Integrated Wireless Mesh Network ,Motion Sensor,Daylight Sensor



First **Plug&Play** Smart Design

World's first patented designed module type plug & play Zigbee add-on sensor and sensor embedded luminaire. User can easily scale from a standard fixture to a smart light fixture in 3 seconds.



3 Seconds Easily Plug-in



Wireless Mesh Network Control Smart LED High Bay Light

Compared with the traditional high bay



Item	traditional high bay	module type plug& play design
Labor cost	Many require re-circuiting or new control wiring Need professional operation, wasting lots of labor costs	Easy plug-in installation, Anyone can complete the smart upgrade of the luminaire in 3 seconds
Upgrade cost	Even if smart lighting is not needed now, upgrades and replacements are very expensive when needed later	Plug and play design, upgrade to smart control, only 3 seconds
Inventory cost	Need to store intelligent control products specifically, increasing inventory costs	Easy plug-in Upgrade, only need to stock standard products
Shipping cost	Intelligent control is customized, purchased according to project requirements, and has high Shipping costs	Module type plug&play sensor and sensor embedded Luminaire, Can be stocked up in advance and reduce shipping costs by sea
Time costs	Re-circuiting or new control wiring wasting time; Can't be stocked up in advance purchased on demand, wasting time	Pre-stocking Meet fast demand; Easy plug-in installation, save installation time
Safety	Wiring messy and exposed, hidden security risks	Luminaire-integrated design reduces complexity, 12V DC safe power supply

On-demand lighting

- If a space is unoccupied, **why** light it?
- If daylight is available, **why** use artificial light?
- If task vary throughout your space, **why** pay for uniform lighting?

Yes-We need to pay for light

BUT-We do not need to pay for the brightest light, everywhere, all day, every day.

CAN BE USED TO COMPLY WITH



**MANDATORY INDOOR LIGHTING CONTROLS
OUTDOOR LIGHTING CONTROLS AND EQUIPMENT**
California Title 24 Part 6 — 2016 is the state energy code for all buildings. New buildings as well as renovations/alterations must adhere to the requirements in Title 24 — 2016.

APP, Network control

Lights in multiple locations can be controlled from wireless devices such as mobile phones (IOS/Android system).



Occupancy Sensing

Typically Saves: 15–55%

No one needs light in empty spaces. Turning lights off or dimming when no one is there to use them is an obvious and easy way to save energy



Daylight Harvesting

Typically Saves: 15–45%

Get More from Your Daylighting. Daylight harvesting automatically regulates the use of electric lighting in response to the amount of daylight available. make sure you use only what you need.



Auto Scheduling

Typically Saves: 10–40%

Tell the Smart HighBay when to illuminate a zone and it will take care of the rest with auto-adjustments based on your time zone. Update schedules right from your smartphone



Load Shedding

Typically Saves: 15–45%

Load-shedding, or temporarily reducing the load of a system to avoid energy costs when they're at their highest



Task Tuning

Typically Saves: 5–15%

Programming the output of an individual or group of luminaires to the level that provides just the right amount of light for the space, task or area.



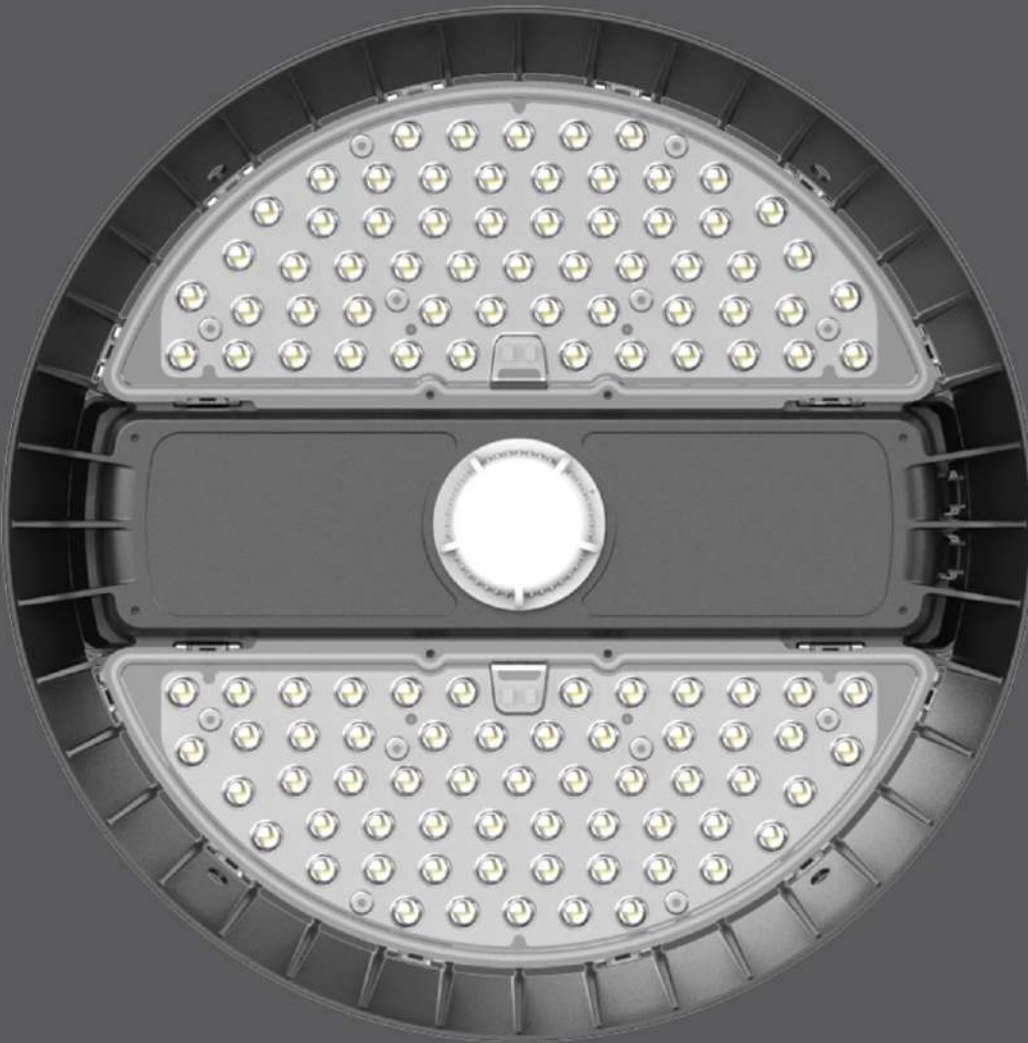
Zoning & Group control

Typically Saves: 5–20%

Group luminaires and form unique lighting control zones for a control strategy via software-defined means not via electrical installation details (e.g. wiring).

Plug & Play Motion Sensor

Automatic Dimming---On-demand lighting



Plug and play



Zigbee mesh network control



App control



On/off control



Daylight sensor



Remote control setting



10-15M High altitude

Wireless Daylight Sensor

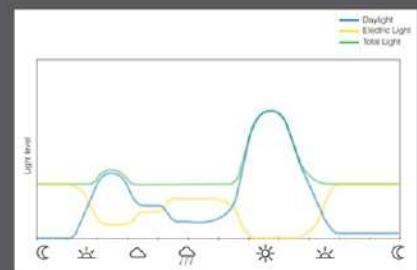
Daylight harvesting automatically regulates the use of electric lighting in response to the amount of daylight available. make sure you use only what you need.



Night: Same brightness for all area



Day : Lower brightness on the windows side



Automatic dimming -- On-demand lighting

Occupancy Sensors & Code Compliance---According to IECC 2015 Code Provision C405.2.1.1.1, office and warehouse fixtures must automatically turn off within 30 minutes of all occupants leaving the space

Daylight Harvesting & Code Compliance According to IECC 2015 Code Provision C405.2.3.12 ,

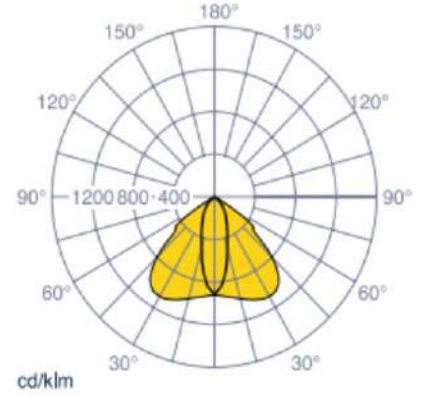
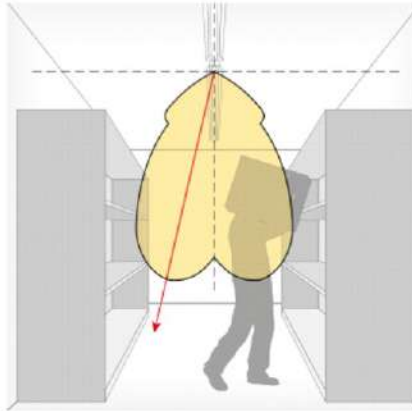
daylight-responsive controls should be installed within each space with sidelight and toplight daylight zones totaling more than 150W.

Various Optics

Placing light where needed

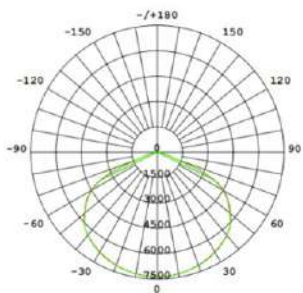
Aisle optic

Suitable for storage spaces, warehouses or retail with narrow spaces between the racks.

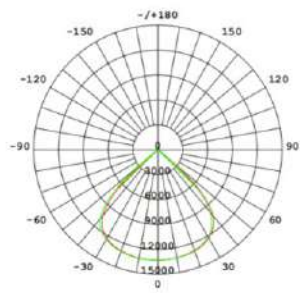


Wide, Medium, Narrow Optics and Dome Lens options offer versatility

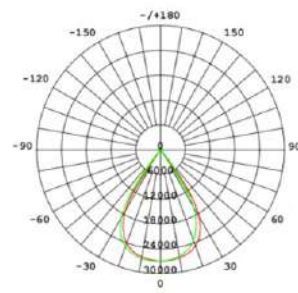
Snap-on design, lens can be replaced quickly and easily



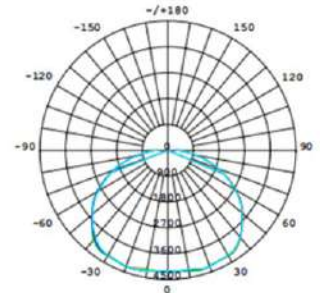
120° Wide Angle for
Factory /Gymnasiums
/Athletic Center



90° Medium Angle for
Large Open Areas



60° Narrow Angle for
Highly installed areas
or Narrow Areas



Dome lens

Different applications, different choices



High Bay with PC lens



High Bay with
aluminum reflector



High Bay with prismatic
reflector and drop lens

Field installable

Uplight Kit

Eliminates dark ceilings and corners



Less screws,
Easy to exchange and assemble

SKD,CKD Available

Snap-on design,
Quick changeable lens



Various Mounting Options for easy installation



Hook Mount



Adjustable
Bracket



Steel Rope
Pendent mount



Indirect Mount



NPT Pipe
Mount



Pole Mount as
Post Top Light

Special Models

Dolphin Series

Smooth LED High bay Luminaire

Ip67 sleek structure suitable for food processing or dusty area



Cactus Series

High Temperature High Bay

Valid over the entire temperature range from -40 oF to 149 oF (-40°C to +65°C)



Please contact sales representative for the special models

On-Demand Lighting-World's First **Plug&Play Smart** LED High Bay Light

Model Number	A-EHB75	A-EHB100	A-EHB120	A-EHB145	A-EHB190	A-EHB240	A-EHB300
Input Wattage	75W	100W	120W	145W	190W	240W	300W
Standard	Efficiency(+/-5%)	Up to 170lm/W					
	Delivered Lumens (+/-5%)	12750lm	17000lm	20400lm	24650lm	32000lm	40800lm
Economic	Efficiency(+/-5%)	Up to 145lm/W					
	Delivered Lumens (+/-5%)	10800lm	14500lm	17000lm	21000lm	27500lm	34500lm
Input Voltage	100-240VAC/120-277VAC/249-528VAC , 50/60Hz						
CRI	73+(80+ optional)						
CCT	5000K(3000K, 4000K available)						
Beam Angle	60°,90°,120°, Aisle optic 50*100°, Dome Lens					60°,90°,120°Custom optical	
Power Factor	≥0.95						
IP Rating	Ip65						
Working Temp	-40-122°F (-40-50°C)						
Warranty	5 Years standard (can be extended to 10 Years)						
Certifications	ETL, cETL,DLC Premium, FCC, SAA, CE, RoHS, NSF						
Control Options	DALI, ZigBee, Bluetooth, Daylight Sensor, Motion Sensor, 1-10V Dimming						

Accessory Options



Ordering Guide

Family	Watts	Beam Angle	CCT	Finish	Voltage	Mount	Options
A-EHB							
A-EHB=ACE Easy Serious Smart High Bay Light	75=75W 100=100W 120=120W 145=145W 190=190W 240=240W 300=300W	60D=60° 90D=90° 120D=120° 5010D=50*100° DM=Dome lens CO=Custom Optical	30=3000K 40=4000K 50=5000K	BK=Black, std SV=Silver WH=White CC=Custom Color	(OMIT)= Universal 120- 277V, std HV=249- 528VAC	(OMIT)=Hook(1/ 2"NPT), std BT=Bracket SR=Steel Rope NC=3/4" NPT Converter	(OMIT)=None, std MS=Motion Sensor DS=Daylight Seneor ZG=Zigbee Control DM=1-10V Dimming DA=Dali Control UP=Up light

Contact Information:

E2 Lighting International, Inc. | Phone: 213-270-1938 | Fax: 213-477-2257 | Web: www.e2lightingusa.com | E-mail: sales@e2lightingusa.com