

Ultra Slim Recessed Downlight LIGHT

Model: E2-P23-DL series

Damp location

NEW

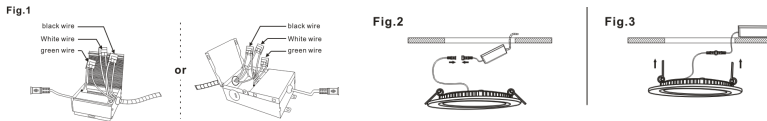


IC RATED



Dimensions:

E2-P23R8-4"		E2-P23R15-6"		E2-P23R18-8"	
OD 4 3/4"	H 1 3/8"	OD 7 1/2"	H 1 3/8"	OD 9"	H 1 3/8"
OD 120mm	H 35mm	OD 190mm	H 35mm	OD 230mm	H 35mm



Hole-Cut Size:



4 3/4" ± 1/8"	6 1/2" ± 1/8"	8" ± 1/8"
95 ± 3 mm	165 ± 3 mm	205 ± 3 mm
4"	6"	8"

PRODUCT DESCRIPTION:

The E2 LED Down-light with Junction box is an Ultra-Thin Recessed Down-light. This is IC rated for direct to insulation, So, mounted cans are not in the ceiling. Its super thin profile allows you to install into almost any location with its two pressure fit clips for quick installation. These Down-lights are suitable for damp locations and soft-fit installations, which is perfect for limited space locations.

FEATURES:

- Comes with driver junction box.
- Damp rated version, suitable for bathroom installations.
- Easy to install, LED light fixture and junction box are all detachable.
- Edge lit technology eliminates hot spots, smooth 3 wide spread, the absolute best in the industry.
- Dimmable with most wall/box dimmers.
- Approved by ETL Standards for Canada and USA.
- Housing is made from extruded aluminum. Polycarbonate lens, stainless steel locking mechanisms.
- Trim color Optional : White (W), Black (B), Oil-Rubbed Bronze (RB) or Satin Nickel (SN)

APPLICATION:

Home Renovations-Living Room, Hallway, Kitchen & Bathroom, Hotels, Libraries, Offices, Garages, Work Areas.

WARRANTY:

E2 warrants that our LED products will be free from defects in materials and workmanship for a period of five (5) years from the date of delivery to the end user, including coverage of light output, color stability, driver performance and fixture finish. Please see our complete warranty terms located at www.e2lightingusa.com.

SPECIFICATIONS

Sample Catalog No.: E2-P23R15-6-345K

Model No.	Wattage	LED Type	Beam A°	Lumens	Input	CCT Tunable	Dimmable	Trim Color	CRI	Power Factor	Lifespan(hrs)
E2-P23R8	9W	SMD 2835	110°	>630lm	120-277V	3000K	Yes	White	80	>0.95	50,000
E2-P23R16	16W	SMD 2835	110°	>1120lm	120-277V	4000K	Yes	White	80	>0.95	50,000
E2-P23R18	18W	SMD 2835	110°	>1300lm	120-277V	5000K	Yes	White	80	>0.95	50,000